



McGRATH POND & SALMON LAKE ASSOCIATION

SPRING 2009

## MPSLA Updates Challenges Ahead

*How Can you Support the Association?* by Don Borman

**W**hether you pay dues or not, you are part of the McGrath Pond Salmon Lake Association because you live in the Watershed. Our success in the upcoming months could have a tremendous impact on the quality of our water supply, our enjoyment of the lakes and ultimately the value of property. Each of us has a great stake in the success of our efforts and we need everyone to be part of the solution.

As you all know, Salmon Lake has the first reported infestation of Eurasian Water-milfoil in Maine. Additionally, residential development, increased use, and inconsistent care have adversely affected our water quality; specifically heightened phosphorus levels. Your Board of Directors has been actively working on our shared goals to promote our mission.

Over the last two years, the Association has lobbied the Oakland and Belgrade town councils for budgetary support of our boat inspection programs. The town of Oakland provided \$1000 in funding in '08 and the council is recommending the same funding in '09. Residents can support this at the May 5<sup>th</sup> town meeting at the Messalonskee Performing Arts Center. Unfortunately, we have been unsuccessful in getting consideration or backing for funding in the Belgrade budget process either year.

To supplement funding we are expanding our business partner program. Despite our economic downturn, several businesses have signed on to support our efforts. Help us show our appreciation by thanking our partners and utilizing their businesses. On the personal level, join the association at whatever financial support you can afford.

The Association expends the majority of its funds on the Courtesy Boat Inspections and support of the Conservation Corps. Additionally, we support educational programs and the publication and dissemination of this newsletter. In addition to your financial support, we need your involvement. On the simplest level, reading the newsletter hopefully provides insight into operations and education about lake quality issues. On the next level, we suggest that you attend educational programming and the annual meeting. For those who want to be more pro-active, volunteer for our lake monitoring programs or courtesy boat inspections. Lastly, we are looking for individuals who would like to join the Board as committee members, Board members and officers of the Association. Several board members term expires and our officers are finishing the second year of a two year term.

I ask you all to consider membership in our Association. If you have an inclination to be personally involved in any way, contact me by e-mail at [tborman@roadrunner.com](mailto:tborman@roadrunner.com) and share your area of interest.

Thank you all for your support and dedication to the quality of life in the Belgrade Lakes Watershed.

### **PUBLIC INVITATION**

*A forum on Eurasian Water Milfoil*

*7 PM - May 27th*

*Messalonskee High School*

***What is it? - Where is it? - What are we  
Doing? - WHAT CAN I DO?***

On May 27th, MPSLA BRCA and DEP are co-sponsoring an evening forum to educate the public on Eurasian Milfoil in Salmon Lake. Representatives from the Department of Environmental Protection will facilitate this educational program with a Q & A session following the presentation. With a continued Surface Use Restriction in place for Kozy Cove, DEP divers will scour the cove and boat landing; harvesting any surviving plants in early May. By May 27th, we will have an accurate prognosis and action plan for dealing with Milfoil during the upcoming season. Following the Q & A session, resident volunteers will receive orientation information so we can continue our positive impact on this environmental threat.

### **Annual Meeting July 11**

This summer, the MPSLA annual meeting will be held at Pine Tree Camp in Rome. Camp Director, Harvey Chesley, will be available to provide tours of the facility, including the tree house recently completed on the premises. The board is arranging for a catered cook-out at 5:00 PM, followed by a general meeting at 6:15 PM. Additional information and an RSVP form will be provided in a separate mailing or summer newsletter.

Continued on next page

## MPSLA Updates *continued*

### Association Goals

- Improve the water quality through:
  - ~ Participation in the Lake Smart Program
  - ~ Support of Water Quality testing of phosphorus levels McGrath and Salmon
  - ~ Education of our watershed residents
- Increase membership in our Association
  - ~ Develop a tax data base for Oakland and Belgrade residents
  - ~ Create a directory of road associations and contacts
  - ~ Foster a relationship with business partners
- Eradication and/or containment of Eurasian Water-milfoil
  - ~ Survey coastlines of both lakes
  - ~ Collaborate with DEP and BRCA on annual plan
  - ~ Support Courtesy Boat Inspections with increased volunteers

### How Can you get involved – Volunteerism

- Join the Association – See flyer attached
- Get your property Lake Smart qualified
- Take a shift at the boat landing for CBI's
- Attend an educational meeting and the MPSLA annual meeting
- Are you a certified diver – help survey designated lake bottom areas
- Kayak or canoe the coastline as part of a well planned survey team
- Maintain your property and promote water quality
- Attend the upcoming fundraisers

## SUR Explained: A letter from DEP

...Commissioners of the Departments of Environmental Protection and Inland Fisheries and Wildlife have determined that a **Surface Use Restriction** in the outlet cove is needed again in 2009 to 1) **prevent fragmentation** of Eurasian water milfoil stems that could produce new plants in the cove, 2) provide a **safe working environment** for divers and other authorized personnel working in the marked area, and 3) **reduce the likelihood of spreading Eurasian water milfoil** from the cove to other reaches of Salmon Lake.

This Surface Use Restriction applies to **all boats except those exempted by DEP.**

Specifically, shorefront residents of the outlet cove are **permitted to access Salmon Lake** because:

- A. Milfoil, while present in the cove, is at **low density**
- B. **DEP expects to remove the milfoil** again in 2009, beginning in May
- C. Use of the cove by residents is anticipated to be **minimal**
- D. At least one resident has a **business dependent upon access** to the open lake.

DEP requests that residents in the cove:

- A. **Travel through the cove only to access Salmon Lake**
- B. **Stay in channel**
- C. **Stay clear of all buoys**
- D. **Keep motor trimmed up**
- E. **Inspect motor and remove all vegetation prior to exiting the cove.**

In addition to the "Area Closed" buoys installed after the August 2008 discovery of Eurasian water milfoil in the cove, two nets will be placed across the cove mouth in 2009 to reduce the chance of Eurasian water milfoil fragments blowing out into the lake on west winds. A gap between the two nets will allow you to travel between the cove and lake....

**Prevent this...**



**By doing this...**



Salmon Lake contains Eurasian water milfoil, an especially aggressive invasive plant.

**Please...**

Inspect and remove ALL plant debris from boat and boating equipment. Collect ALL plant material snagged on fishing & anchor gear. Dispose in trash. Steer clear of marked Milfoil Control Area.



**Looking for certified divers to survey  
 Kozy Cove and Boat Landing.  
 Contact Don Borman at 465-2860  
 or [tborman@roadrunner.com](mailto:tborman@roadrunner.com).**





## An Investment with Dividends by Mark Gray

Looking for good investment advice? Look no farther! An annual Membership in the McGrath Pond/Salmon Lake Association will pay dividends for you, for your family, and for generations to come. If you own a business that benefits from the increased summer activities that take place in the Belgrade lakes region, we would welcome your membership in our Association as well.

If you own a year-round home or a seasonal camp on McGrath Pond or Salmon Lake, you know the value of your investment. With the discovery of milfoil near the Salmon Lake boat landing last year, it is now more important than ever that we all work together to protect our investment. An investment in an MP/SL Association membership is a good first step to help protect the water quality, the wildlife, the recreational opportunities, and the natural beauty that has drawn all of us to this beautiful lakes area.

It is our responsibility to protect these lakes so that all of us can enjoy the many dividends that McGrath Pond and Salmon Lake provide.....canoeing, swimming, kayaking, bird watching, loon counting, sailing, fishing, (summer & winter), boating, floating, or just relaxing!

If you are a business owner in the area, the increase in summer activity around the lakes brings back customers, both old and new, every year to help sustain your business throughout the year. Think of an investment in a MP/SL Association membership as an investment in your business and in your future as well.

To find out more about how to become a member, or to renew your annual membership in the McGrath Pond/Salmon Lakes Association, see the 2009 Membership Form inside this newsletter.

Welcome to another wonderful year on our lakes. Hope to see you on the water enjoying your membership dividends this summer!



*Ben Jackson and Cassie, winner of Oakland Recreation childrens fishing derby.*



**WHISPERWOOD LODGE & COTTAGES**

Open for the season  
May 15th

Breakfast 8:am-9:am  
Dinner served at 5:pm

South end of Salmon Lake  
103 Taylor Woods Road  
North Belgrade

Boat docking available  
for Lake residents

**Now open to the public for Dining**

By reservation only, call us at **465-3983**

Daily menu listed on website: [www.whisperwoodlodge.com](http://www.whisperwoodlodge.com)

**Integra Services LLC**  
The Personal Alternative

**Donald B. Borman**  
Tax Preparation

166 Old Waterville Road  
Suite 2  
Oakland, ME 04963

207-465-7638

[dborman@dialmaine.com](mailto:dborman@dialmaine.com)






**MID-MAINE  
MARINE & R.V., INC.**

885 Kennedy Memorial Drive  
Oakland, Maine 04963

**Frank S. Preglovick**  
**Jacqueline B. Preglovick**

Tel (207) 465-2146 • Fax (207) 465-2866 • 800-649-BOAT (2628)  
[www.midmainemarine.com](http://www.midmainemarine.com) • [sales@midmainemarine.com](mailto:sales@midmainemarine.com)

**1/2 MILE WEST OF EXIT 127, OFF INTERSTATE 95**



**ESTHETIC  
&  
RECONSTRUCTIVE  
DENTISTRY**

**Peter B. Laliberte D.M.D., P.A.**  
**Jay R. Wietecha, D.M.D., P.A.**

98 Silver Street  
Waterville, Maine 04901  
**873-2073**  
[www.ERDentistry.com](http://www.ERDentistry.com)

*"An emphasis on excellence"*

## MPSLA Board Committees

### Education/Water Quality

Ron Purnell  
John Loomis  
Robyn Deveney  
Dick Enright

### Membership

Jay Wietecha  
Andrea Rhoda  
Bill Pullen  
Gina Murphy

### Town Relations

Doug McCafferty  
Mark Gray  
Rick Swanson

### Newsletter

Neil Amalfitano  
Don Borman



McGRATH POND  
& SALMON LAKE

❖ A S S O C I A T I O N ❖



## *Annual Membership Form*

January 1 – December 31, 2009

We need all Watershed residents to support the Association with tax-deductible membership contributions and funding for our education and water quality improvement efforts as well as our Courtesy Boat Inspection Program on McGrath Pond and Salmon Lake. Please consider joining or renewing at the highest membership level you can comfortably afford (\$25, \$50, or \$100). Additional contributions for the courtesy boat inspections and the education fund will help ensure the quality of our watershed area and the value of your property! If you are affiliated with a business and would like to join as business partner, contact Jay Wietecha, (465-9692)

### **Membership Levels**

\_\_\_\_ \$25 Association Membership

\_\_\_\_ \$50 Lake Steward Membership

\_\_\_\_ \$100 Watershed Futurist Membership

\_\_\_\_ Other Amount \_\_\_\_\_

### **Additional Funding**

\$\_\_\_\_\_ Courtesy Boat Inspection Program

\$\_\_\_\_\_ Frances Fox Sandmel Education Fund

\$\_\_\_\_\_ TOTAL AMOUNT -- Thank You!

Name(s) \_\_\_\_\_

Home Address \_\_\_\_\_

\_\_\_\_\_

Home Phone No# \_\_\_\_\_ Email address \_\_\_\_\_

Summer Mailing Address (if different) \_\_\_\_\_

\_\_\_\_\_

Summer Mailing Dates \_\_\_\_\_ Summer Phone # \_\_\_\_\_

***We Need Volunteers! Would you consider volunteering for the following activities?***

\_\_\_\_ *Boat Ramp/Milfoil Monitor*

\_\_\_\_ *Membership Committee*

\_\_\_\_ *Water Quality Committee*

\_\_\_\_ *Newsletter Committee*

\_\_\_\_ *Board Member*

\_\_\_\_ *Other*

Please mail this form & check payable to McGrath Pond-Salmon Lake Association to:

John Loomis, Treasurer, MPSLA  
3 Bringham St., Waterville, ME 04901





## MPSLA Joins Lake Smart Effort by Rick Swanson

In addition to addressing issues specific to McGraw Pond and Salmon Lake, the MPSLA, along with the other associations of the various Belgrade lakes, works closely with the Belgrade Regional Conservation Alliance to tackle problems affecting all of our lakes. One of these joint efforts is a program called "Lake Smart".

The LakeSmart program was started by Maine DEP in 2003 as a way to encourage shoreline property owners to use lake-friendly practices at their home or camp. The entire property – driveway, structures, septic system, lawn, buffer, and shoreline – is evaluated, and properties that score well in all areas receive a LakeSmart award and a sign to post to let everybody know just how "LakeSmart" the property owner is. Just as importantly, the evaluation includes recommendations to help homeowners make their property more lake-friendly.

LakeSmart came to the Belgrade Lakes in 2005, when Great Pond and Long Pond joined the program. To date, 32 residents of these lakes have received LakeSmart awards, and 24 more have received recognition in one or more categories. In 2009, the program will be expanding to East Pond, Salmon Lake, McGrath Pond, and Messalonskee Lake. Two members of the MPSLA will be receiving training in this program and we look forward to seeing many "LakeSmart" signs springing up around our lakes.



If you are interested in participating or have any questions, please contact the BRCA or any Board member of the MPSLA. You can also visit the BRCA website for more information on this program. Even if you do not believe your property will qualify, you can still get important information about how to help protect our lakes.



*Pete Kallin, BRCA Director, shows off environmentally (clean) boat*

## Let's be careful about what ends up in Salmon and McGrath. by Ron Purnell

Here are some quick ideas on maintaining a healthy water quality.

Grass and Leaves add nutrients to our lake. Don't allow them to blow or wash into the lake.

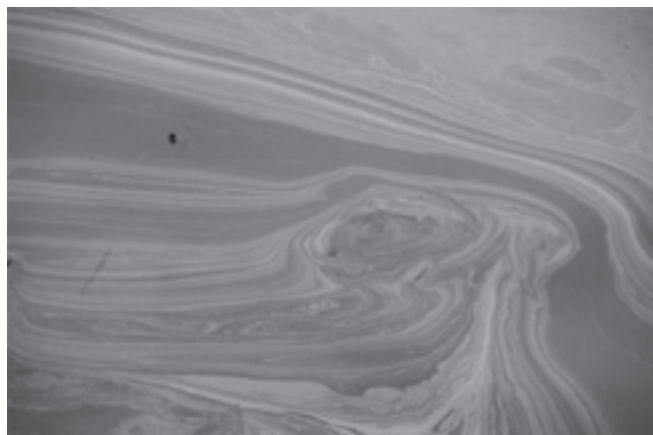
Pet Droppings add nutrients to our lakes. Pet droppings account for a large source of phosphorous and other nutrients. Cleaning up after pets is considerate and responsible.

Watch for chemicals on lakeside driveways and lake roads. Spilled chemicals will find their way into our lake.

Be responsible with motorized "toys". Be careful with gas and oil in your boat and on your snowmobile. Refuel them carefully, if possible, before entering the watershed. Leave the lake as you found it. No one wants to swim among bait containers or empty oil jugs. Fishing line should be recycled.

Fertilizers and pesticides should be used very sparingly in the watershed area. The same chemical that makes your lawn green makes your lake green too.

Maintain your septic system. Have it pumped and inspected regularly. Upgrade to a newer system at the first sign of trouble.



*Oil and water don't mix*



## Lake Association Partners With DEP by Don Borman



On April 6<sup>th</sup>, board members of MPSLA and BRCA representatives met with DEP officials to outline plans for the battle against the invasion of Eurasian Water-milfoil in Salmon Lake. Late last summer and throughout the fall, lake volunteers and employees of DEP scoured Kozy Kove and both McGrath and Salmon to locate, eradicate and minimize the presence of this invasive plant. While initial results were very encouraging, we will have to wait until ice out and a spring time survey to determine the effectiveness of our joint efforts.

Lake residents can be assured that the thick ice and record snow has not “buried” our planning and responses to this challenge. As an association of volunteers, we will need the efforts of our members to carry out our plans. Please consider volunteering your time, providing financial support through membership, and demonstrating positive lake stewardship through property management and education. The following summary outlines our plans for the coming months.

- **Education** – On May 27<sup>th</sup>, BRCA, MPSLA, and DEP will co-sponsor a program to educate the Association about Eurasian Water-milfoil. Following the general session, an orientation will be provided for volunteers who want to take part in the surveying of the lakes.
- **Surface Use Restrictions (SUR)** – An order has been drafted by DEP and is awaiting signatures by David Little, commissioner of DEP and Roland Martin, commissioner of IFW to restrict boating in the Kozy Kove area for the 2009 season. This would be an extension of the 2008 order.
- **Communications** – Letters will be delivered to Kozy Kove landowners outlining the restrictions. This will be followed by personal contact – Residents of the Kove will be allowed to enter and exit the cove through a designated channel, but other boating will be banned.
- **Netting** – DEP will reinstall a net at the outlet, in the area of the dam flowing into Hatchery Brook. A new series of nets will be placed at the mouth of the cove to restrict casual boating and prevent milfoil fragments from floating back into the lake.
- **Signage** – A temporary sign will be installed at the mouth of the Kove indicating that boating is prohibited in this milfoil control area. A second sign will be installed at the boat landing warning of milfoil infiltration and the closing of the cove.
- **Boat Inspections** – The Association, with the financial support of DEP and BRCA will increase hours of the courtesy boat inspections. This will help to educate boaters about the infestation and protect other lakes from possible transfer. (Anyone who can help spread our resources by becoming a Volunteer boat inspector would be greatly appreciated. Please contact xxxxxx if you are interested.)
- **Surveying and Plant Removal** – DEP will coordinate a mid May survey of the cove with boats and divers. As necessary, plants will be hand pulled. A “clamshell” barrier is being tested to cover infested areas to limit and/or eliminate growth and spread of the plant. In the early stages, weekly dives will occur to monitor removal efforts. (Volunteers needed)
- **Next Steps** – The response committee will meet on May 18<sup>th</sup> to review conditions. A report will be available at the May 27<sup>th</sup> forum.



*Many thanks to the volunteers who surveyed the shallow shoreline on Salmon Lake*





## Eurasian Water-milfoil

*Myriophyllum spicatum*

MAINE VOLUNTEER LAKE MONITORING PROGRAM  
[www.mciap.org/herbarium/EurasianWaterMilfoil.php](http://www.mciap.org/herbarium/EurasianWaterMilfoil.php)

**E**urasian Water-milfoil is well-adapted and able to thrive in a wide variety of environmental conditions. It grows well in still and flowing waters, tolerates mild salinities and can survive under ice. EWM grows in water depths from 1 to 10 meters, generally reaching the surface in depths of 3 to 5 meters. Adaptable to a wide variety of lake bottom types, it seems to favor

fine-textured, inorganic sediments. Plants grow rapidly, branching profusely at the surface to form dense floating mats, choking and shading out all other plants. Infestations render waters unsuitable for recreational uses.

EWM grows under water. Its leaves appear in clusters of 3 to 6 (called whorls) which are openly spaced (meaning there is room between whorls on stem), with between 1 and 5 cm of stem between whorls. Each leaf in the whorl will have 12 to 24 pairs of thread-like leaflets presenting a feather-like appearance. The ends of these feather-divided leaflets *may* look blunt, as if snipped.

If you find a suspicious plant, leave it in place, mark the location with a buoy, and call Peter or Mary at 495-6039.

### Be a Boat Inspector

MPSLA leads in hours of volunteer boat inspectors. Our continued diligence is more important than ever. Be part of the solution and join the corps of volunteer inspectors. Most volunteers do one half day shift, which is an enormous help. Several short training sessions are available and you pick the date to do the volunteer work. Call Don Borman at 465-2860 or e-mail at [tborman@roadrunner.com](mailto:tborman@roadrunner.com).



## Surface Use Restriction: Salmon Lake, Belgrade, Maine



Pursuant to 38 MRSA §1864, the Maine Departments of Environmental Protection and Inland Fisheries and Wildlife hereby establish a temporary Surface Use Restriction on the outlet cove of Salmon Lake in Belgrade. The area affected is the entire cove west of marker buoys placed by the Department of Environmental Protection. By this Order, no surface craft, including powerboats, canoes, kayaks or similar craft may enter or traverse the cove unless specifically allowed by the Department of Environmental Protection, except in emergency situations where property or human safety is endangered.

The purpose of this Surface Use Restriction is to enable effective suppression of the invasive aquatic plant *Myriophyllum spicatum* (Eurasian water milfoil) and to prevent spread of this plant within this lake and/or to other lakes. This Surface Use Restriction is in effect from April 15, 2009 to December 1, 2009, unless canceled by the Departments.

ORDERED BY:

\_\_\_\_\_  
 David Littell, Commissioner  
 Department of Environmental Protection

\_\_\_\_\_  
 Roland D. Martin, Commissioner  
 Department of Inland Fisheries & Wildlife

\_\_\_\_\_  
 Date

\_\_\_\_\_  
 Date

John Loomis '07, Treasurer  
3 Brigham St.  
Waterville, ME 04901



## BRCA - Mark Your Calendar

[www.belgradelakes.org](http://www.belgradelakes.org) • Rick Swanson, BRCA representative

**Coming to the Belgrade Lakes on April 22 --- WALKIN' Jim Stolz**  
**"Forever Wild" A Celebration of Wilderness Songs, Stories, Visions**

One of America's most unique folksingers and backcountry travelers, Walkin' Jim Stoltz, on tour from the mountains of Montana, will bring his powerful multi-media show, Forever Wild, to the Center For All Seasons in Belgrade on Earth Day, Wednesday, April 22nd at 7:30 pm. Tickets for the concert will be available at the BRCA for \$10. This event is sponsored by BRCA and is a fundraiser for the Kennebec Highlands Project. The mix of stunning photography, stories, and music make this one-of-a-kind concert an inspiring journey into our nation's last wilderness areas.

Walkin' Jim gets his name from nearly 27,000 miles he has walked through the wild country of North America. Carrying a guitar and

writing his songs along the way, his lyrics express a great love and respect for the Earth and the wild places he knows so well. Known for his powerful baritone and emotion-packed vocals, Stoltz's Forever

Wild show is much more than a concert. It combines live music and poetry with stunning, multi-image slides to create a stirring celebration of the natural world. Stoltz is veteran of more than 30 years of performing. In this year's show he will be sharing images and songs from the Arctic National Wildlife Refuge, his Yellowstone to Yukon walk, the Utah canyon country, the Northern Rockies, and wild places all across America.



### **"Aquafest" 2009**

An event of family activities, canoe racing, childrens' games and opportunities to meet our watershed friends. Last year, this event was held over Labor Day weekend, but this year, the BRCA is looking for a July date. More on the specific content of this year's Aquafest, as well as the actual date, please monitor the BRCA's website.

### **Harold Alfond Memorial Golf Tourney and Reception -- Save the Date**

This biannual pro-am golf tournament will take place on August 19, at the beautiful Belgrade Lakes golf course. The traditional reception will take place outside the clubhouse immediately following the tournament. As a major fund raiser for our lake stewardship, we encourage widespread participation.

### **"Race for the Lakes" -- Saturday, September 5, 2009**

Last year, on the Saturday of Labor Day weekend, we held the first of what is going to be an annual event 5K event.. It was a huge success and will be held this year at Camp Renoia, at the end of Point Road in Belgrade Lakes. Information and sign-up details will be available shortly on the BRCA website.